



Bilingual Safety Floor Signs

- Durable polypropylene construction
- Bright yellow for maximum visibility
- Message in both English and French
- Stamped black lettering will not fade or peel
- 12" W x 24" H
- Weight: 2 lbs.

Model No. JD391
Price/Each \$



Floor Safety Signs

- Highly visible yellow polypropylene floor signs are durable and will not corrode
- Hot stamped lettering will not peel or fade
- **NB790:** Message printed in English, French, German and Spanish
- **NC528:** Message printed in English only
- Folds for convenient storage and transport
- Weight 2 lbs.
- ANSI and OSHA compliant colour and graphics



Model No.	Mfg No.	Message	Height"	Price /Each
NB790	6112	2 Sided Multi-Lingual Caution	25	
NC528	6112-77	2 Sided Caution Wet Floor	25	

Pop-Up Safety Cone

- Bright yellow colour promotes visibility of the safety hazard(s) to help prevent accidents
- Polyester construction is easy to hand wash and resists damage from oils and various chemical solvents
- Bilingual pictogram is large for improved legibility
- Plastic case and wall mounting hardware included
- Height: 30"
- Language: Bilingual with Pictogram

Model No. JI455
Price/Each \$



Pop-Up Safety Cones

- Automatically opens for proper deployment
- Bold colours ANSI graphics and multi-lingual warning message
- Label space on top for location assignment
- Folds compactly for easy storage
- Colour: Yellow
- Wall-mounted shatterproof storage tube provides easy and compact storage



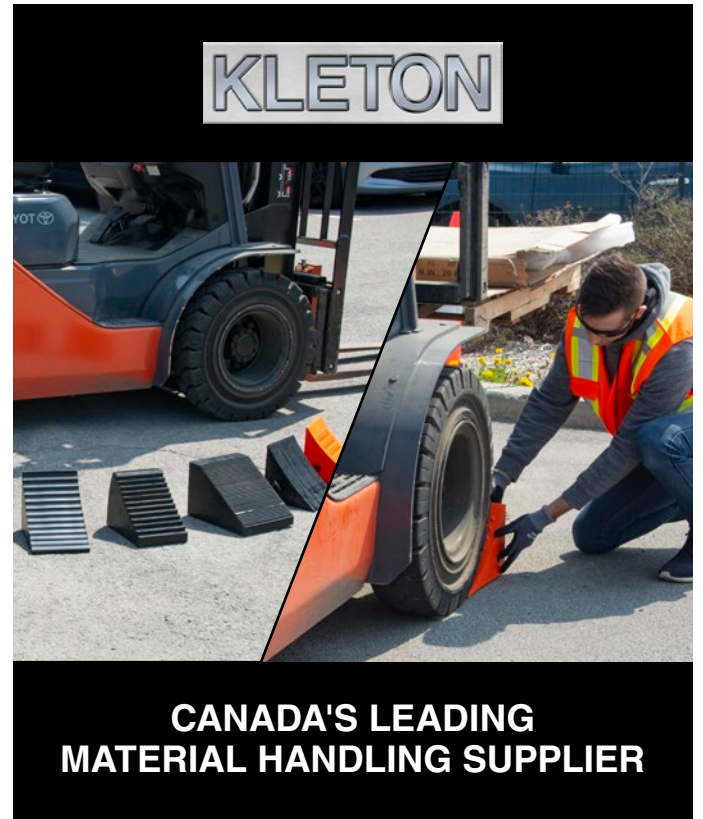
Model No.	Mfg. No.	Message	Height"	Price /Each
JAT131	9500	Multi-Lingual Caution w/Wet Floor Symbol	20	
JA473	9501	Multi-Lingual Caution w/Wet Floor Symbol	30	

Portable Mobile Barriers

Close off an area for maintenance or to isolate a potential safety hazard. Mobile, easy to transport, set up, take down and efficient to store.

- For indoor use
- 13' long with 16 articulating panels
- Two 5" non-marking wheels
- Four locking straps to secure barrier in closed position
- Flexible, can be set straight, curved or in a circle
- Easy to store
- Open: 13' L x 1" W x 40" H; Closed: 2' L x 13" W x 40" H
- Weight: 32 lbs.
- ANSI approved colour and graphics
- Colour: Yellow

Model No. SAJ714
Mfg. No. 9S11
Price/Each \$



CANADA'S LEADING MATERIAL HANDLING SUPPLIER